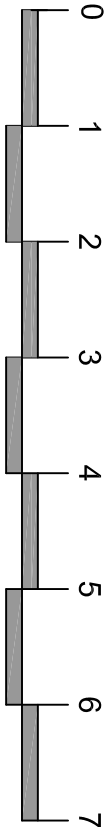
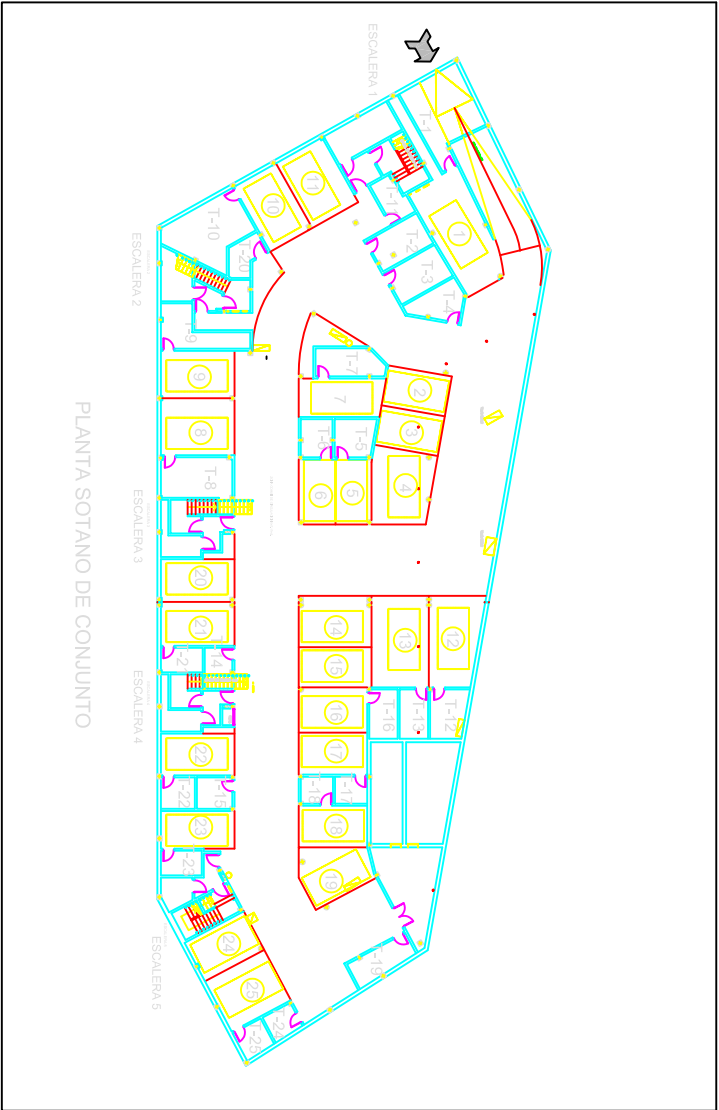
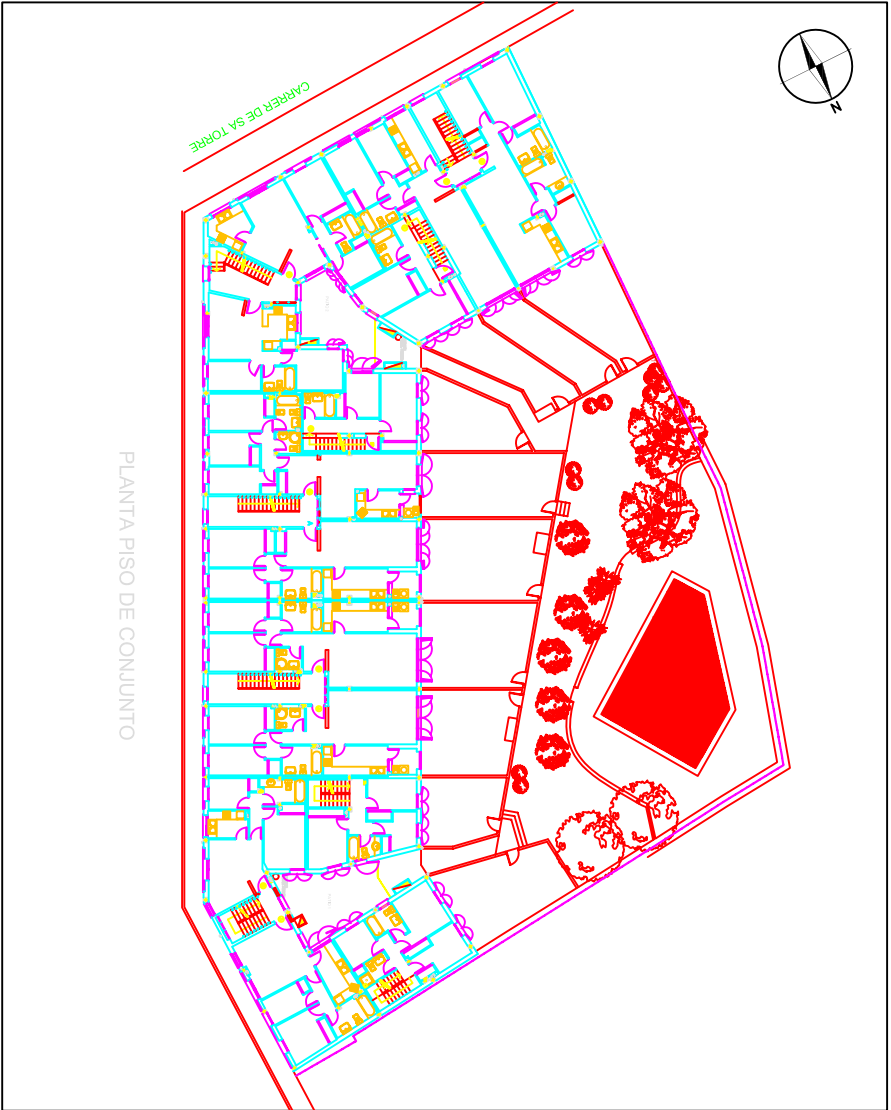
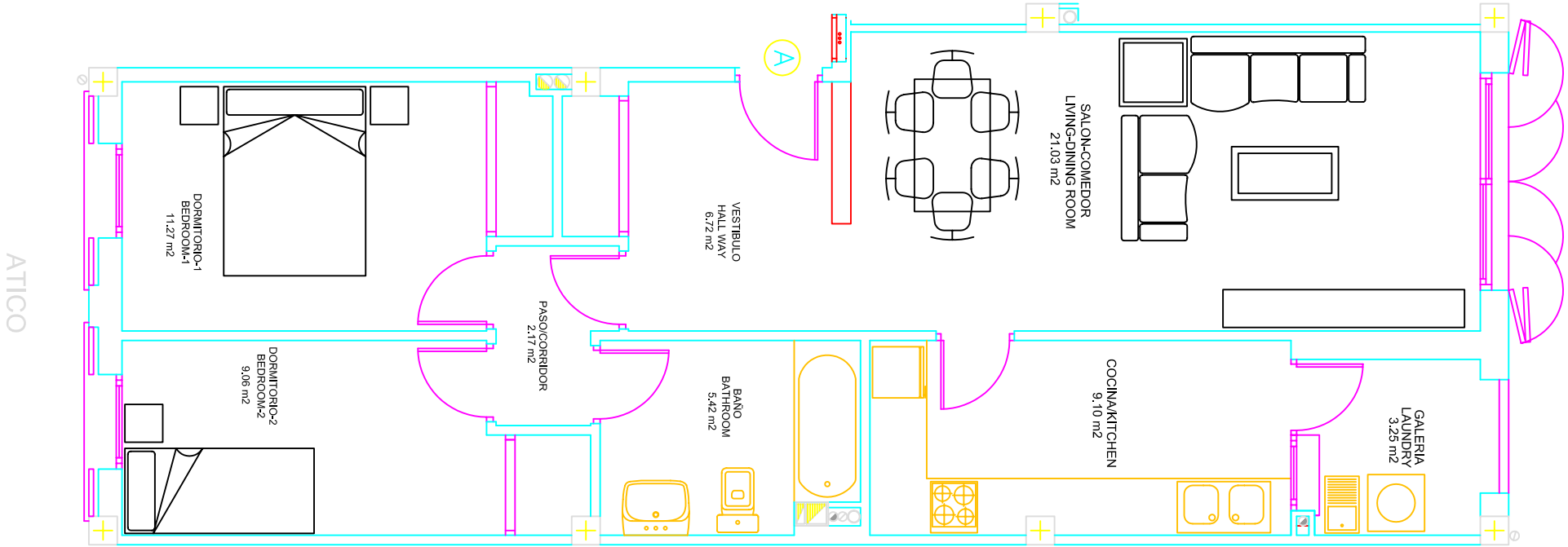


DESIGNACIÓN / DESCRIPTION					
Nº Vivienda Apartment no.	Modelo-Tipo Model-Type	Escalera Stair	Planta Floor	Garaje Garage	Trastero Storage room
13	A	3	AT	14	14
VIVIENDA / APARTMENT					SI
ZONAS COMUNES / COMMUNAL AREAS					78,87
SUP. CONSTRUIDA TOTAL / TOTAL CONSTRUCTED AREA					15,92
VIVIENDA / APARTMENT					94,79
TERRAZA DESCUBIERTA / UNCOVERED TERRACE					68,02
TERRAZA SOLARIUM / SUN TERRACE					0,00
SUP. UTIL TOTAL / TOTAL USABLE AREA					33,53
					101,55



ESCALERA 3  
EDIFICIO 4



OFICINA DE INFORMACIÓN Y VENTA / INFORMATION AND SALES OFFICE

24 viviendas en C/. de Sa Torre. Pòrtol (Marratxí) Mallorca.

Tel.: 971 70 65 70

Fax.: 971 70 65 65